

# CF6-912GEV

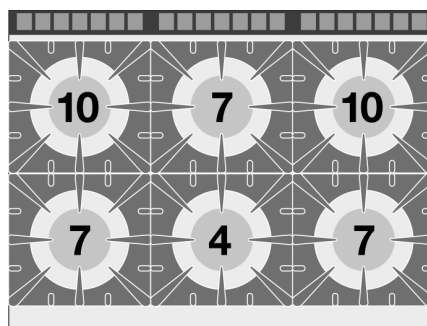
90

## GAS COOKERS WITH ELECTRIC OVEN

Gas Range - N. 6 burners - traditional electric oven cm. 67x73x34h, temp: 50÷300°C, with 1 grid cm.65x71 GN2/1 - Neutral cabinet with door (included 1 Head end filler strip mod.TPC-9)



Construction - Fabricated using CrNi 18/10 AISI 304 grade Stainless Steel Scotch-Brite Satin polish Finish, incorporating 2mm thick worktop, rounded edges, chromed details and rear splash back. Knobs with waterproof grades IPX5. Model -Professional Gas Cooker with static or ventilated electric oven, with or without side compartment. Burners with pilot light ignition and thermocouple safety valves. Modulating flame burners, grills in cast iron or stainless steel rods, removable liquid collectors. Electric oven with 50 - 300degC control. Maintenance - All serviceable parts are accessible by the easy removal of front control panel and liquid collectors. Fittings - Appliance is supplied with both LPG and Natural Gas conversion jets and adjustable feet.



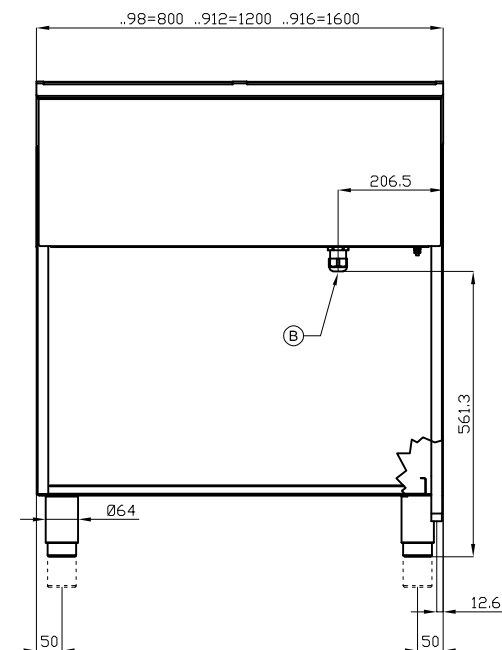
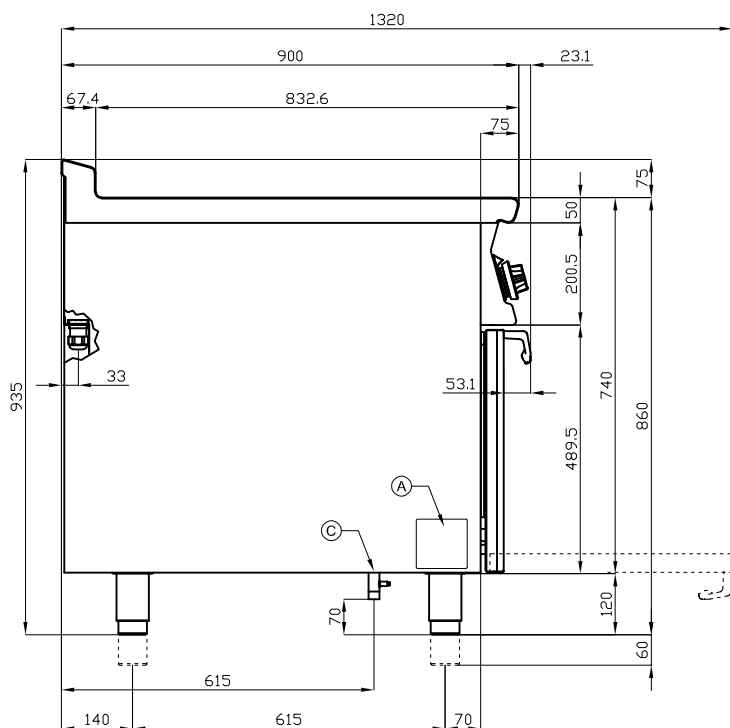
ITALIAN CULINARY ART

The pictures are purely representative. The manufacturer reserves the right to modify the technical data and models without previous notice.

# CF6-912GEV

90

GAS COOKERS WITH ELECTRIC OVEN



A	Data plate		B	Electrical connection	
C	Gas connection	ISO 7-1 3/4" M			

**MODEL:** CF6-912GEV  
**DIMENSIONS:** cm. 120x 90x 90h  
**GAS POWER:** 45 kW / 38.700 kcal/h  
**GAS TYPE:** Natural Gas / LPG  
**ELECTRIC POWER:** 6,7 kW  
**VOLTAGE:** 400V~3N  
**FREQUENCY:** 50/60 Hz



**kg:** 228  
**m<sup>3</sup>:** 1.324  
**mm:** 1230x970x1110

BUY LOTUS BUY ITALY

The pictures are purely representative. The manufacturer reserves the right to modify the technical data and models without previous notice.



LOTUS S.P.A. Via Calmaor, 46  
 31020 San Vendemiano(TV) - Italy  
 Tel. + 39 0438 778020 / 778468  
 Fax + 39 0438 778277  
 www.lotuscookers.it - lotus@lotuscookers.it